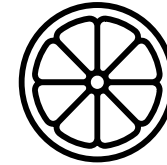
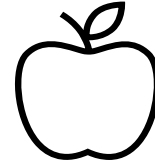
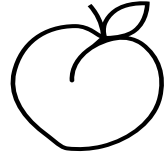
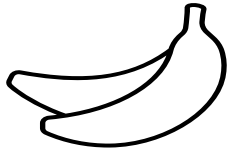
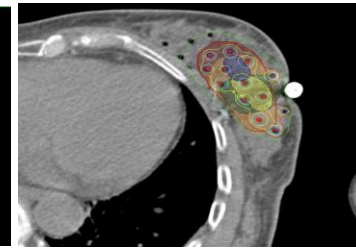
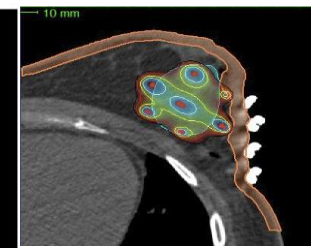
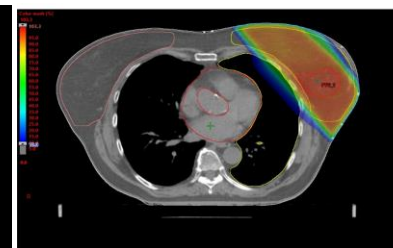
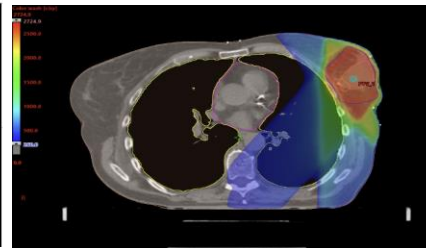
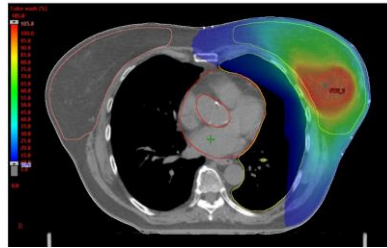
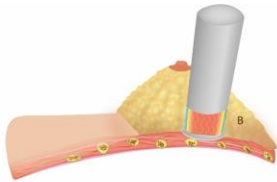
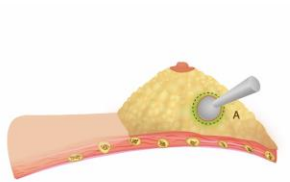


Can you tell the difference between?



Can you tell the difference between?



Alan Pearson Rep Pract Oncol Radiother. 2020

ESTRO Partial Breast Irradiation course

5-8 December 2024, Budapest, Hungary

Early registration deadline: 11 September 2024

~ 50% of newly diagnosed early breast cancer patients will be *eligible* for Partial Breast Irradiation

It is time to improve your practice!

Registration is open: <https://www.estro.org/Courses/2024/Accelerated-Partial-Breast-Irradiation>